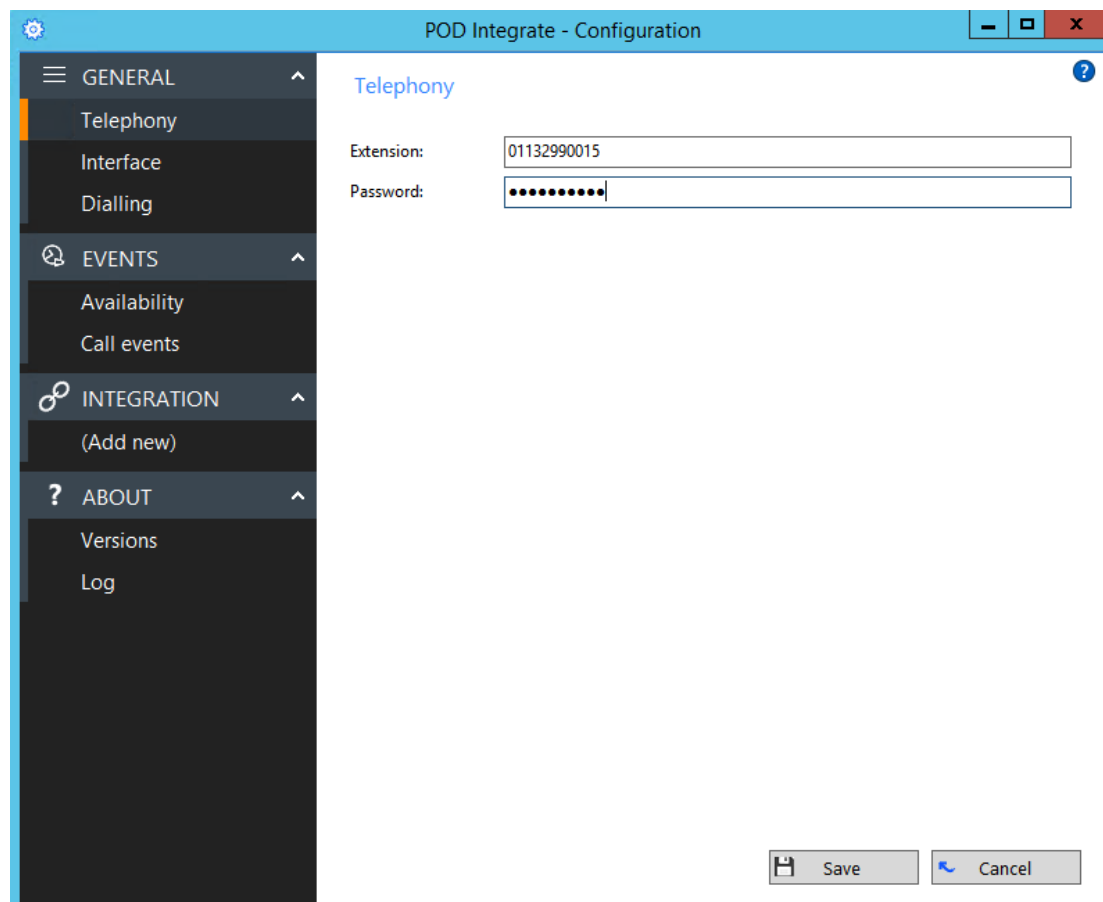


# Basic Setup

Once the installation has been completed Pod Integrate will launch the Main Configuration page as illustrated below. On the **General > Telephony** screen enter the following for your subscriber details:

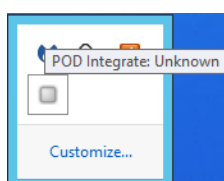


The screenshot shows the 'POD Integrate - Configuration' window. On the left is a sidebar menu with categories: GENERAL (containing Telephony, Interface, and Dialling), EVENTS (containing Availability and Call events), INTEGRATION (containing (Add new)), and ABOUT (containing Versions and Log). The 'Telephony' option is selected. The main area is titled 'Telephony' and contains two input fields: 'Extension:' with the value '01132990015' and 'Password:' with masked characters '.....'. At the bottom right are 'Save' and 'Cancel' buttons.

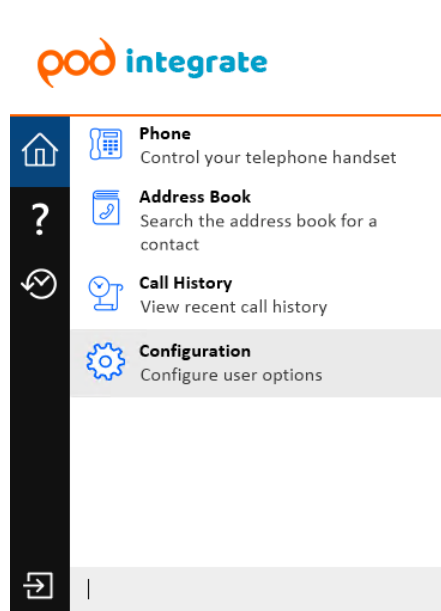
**Extension:** This is your DDI

**Password:** This is your CommPortal Password

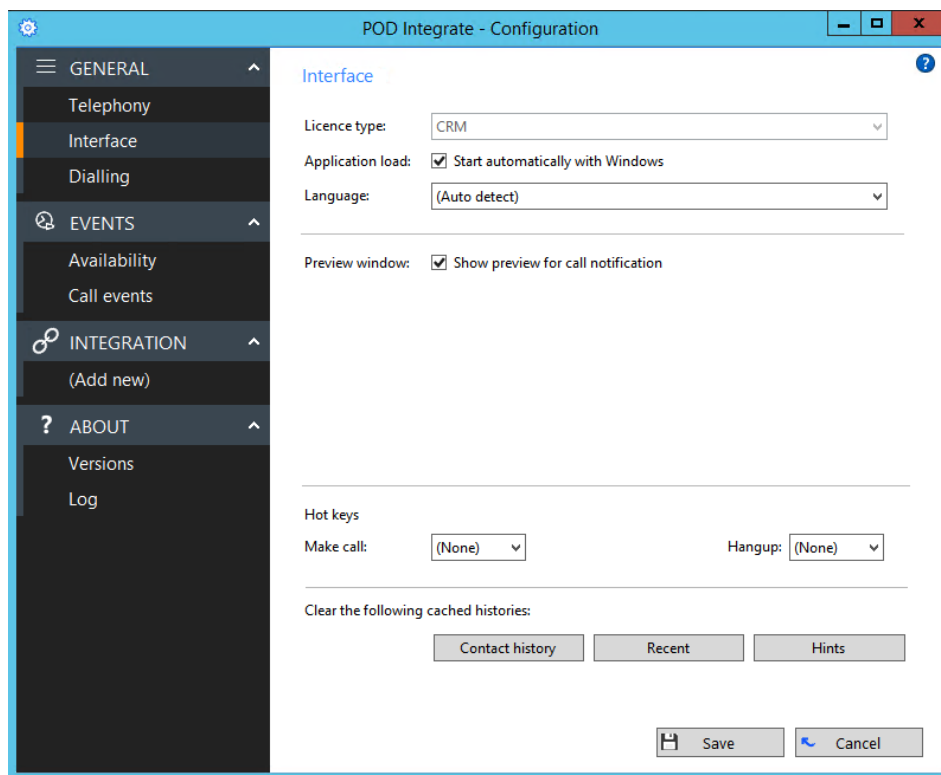
If the above screen does not appear and click on **Show Hidden Icons** and then right click on the **Pod Integrate** icon



Next click on **Configuration**



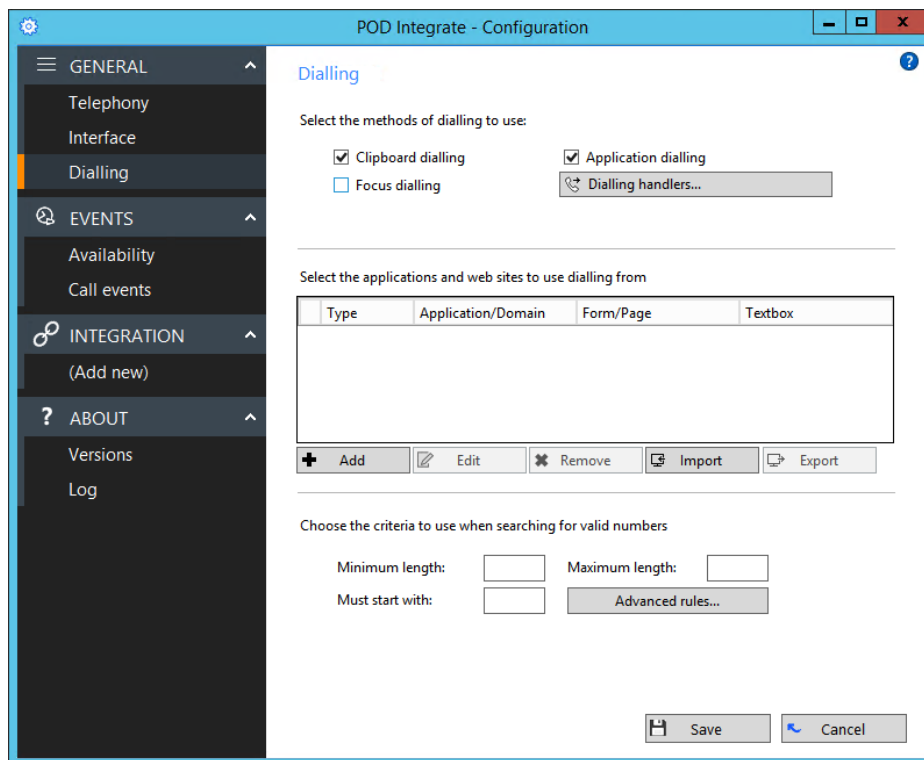
Once the Extension and Password fields have been filled in click on **Interface**



**Application Load** is enabled by default this will automatically start **Pod Integrate** when Windows starts up.

**Preview Window** is enabled by default this will show a popup every time a call is received.

Next click on **Dialling**



You can now select which dialling methods you would like to use, we do recommend **Application Dialling** is enabled.

**Clipboard Dialling:** Each time you copy a valid telephone number to the clipboard, a windows notification will appear which, when clicked, will dial the number.

**Application Dialling:** Pod Integrate supports several methods of dialling from applications. Many applications can be enabled to allow dialling directly from within the application.

#### Focus Dialling:

Focus dialling will automatically detect fields that contain dial-able numbers and will present a click-to-dial option to the right of the field.

If the application field contains more than one potential telephone number, a drop-down is displayed when you hover over the click-to-dial icon, allowing you to select which number to dial.

Next click on **Save**, the task bar icon should now turn green to show that you are connected. (on hook)